

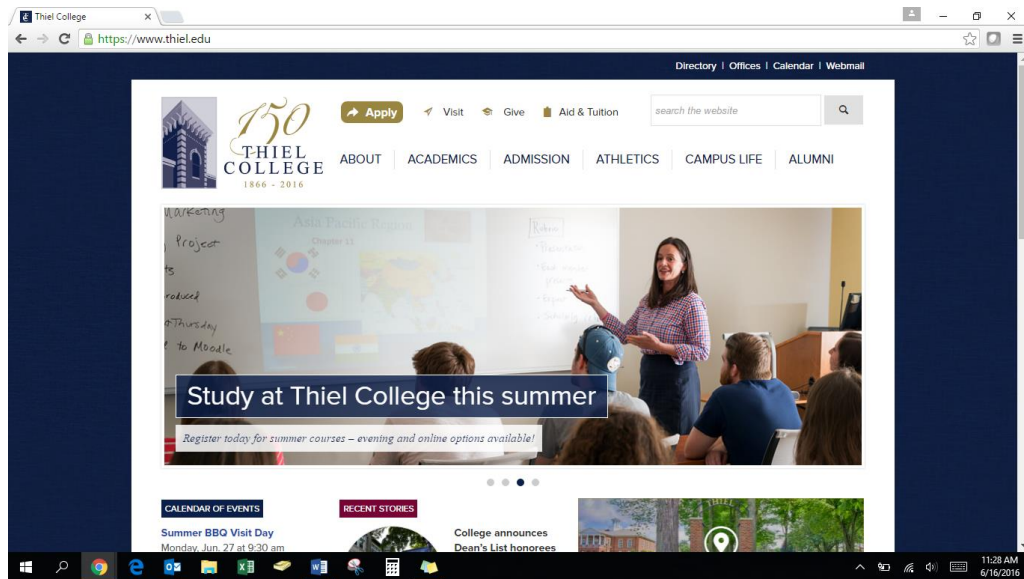
THIEL COLLEGE

Information Technology Support Center

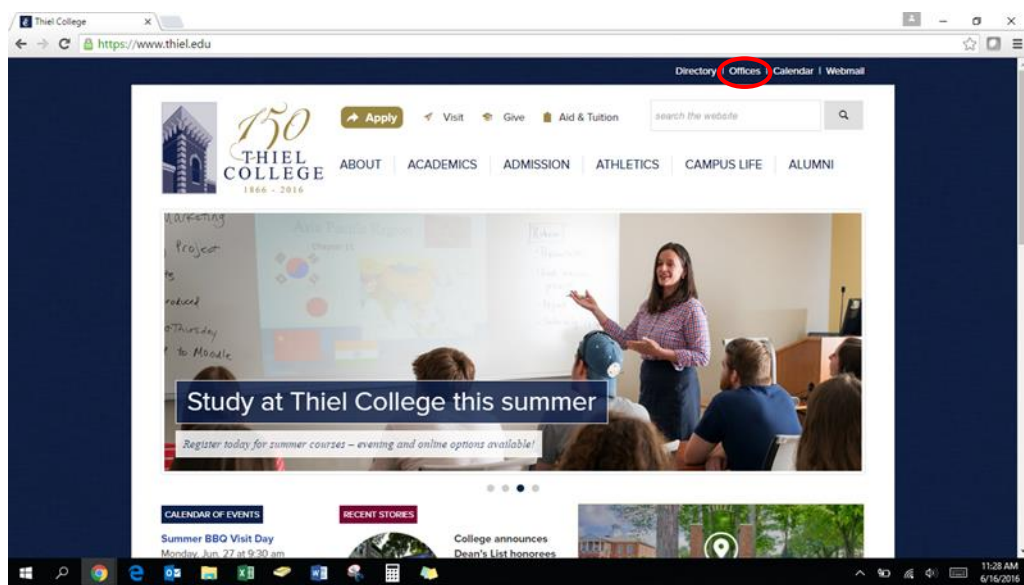
VISIT US IN AC-125 OR CALL X4000 FOR HELP

STUDENT WIRED NETWORK ACCESS

1. Navigate to the Thiel College website. www.thiel.edu



2. Click on [Offices](#).

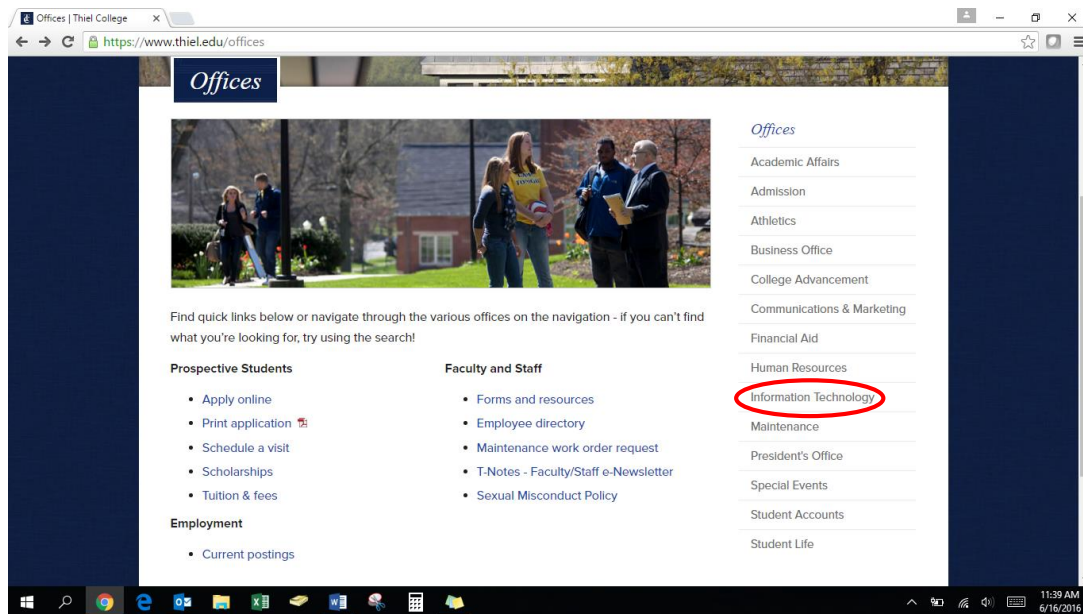


THIEL COLLEGE

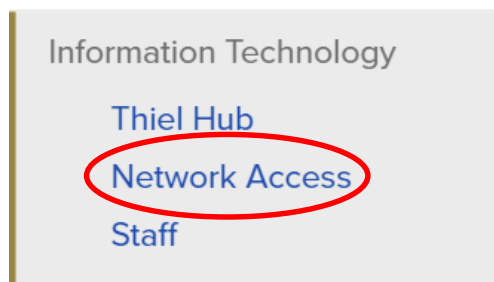
Information Technology Support Center

VISIT US IN AC-125 OR CALL X4000 FOR HELP

3. Click on [Information Technology](#).



4. Click on [Network Access](#).



5. Scroll to the bottom of the page to [Wired Network Access for Residence Halls](#) and click on [Download the zip file](#).

Wired Network Access for Residence Halls

In order to access Thiel network resources such as printers and shared drives, you will need to follow the directions in the PDF below. Without this configuration, you will only have internet access and not Thiel network access. This install is only applicable to Windows-based computers.

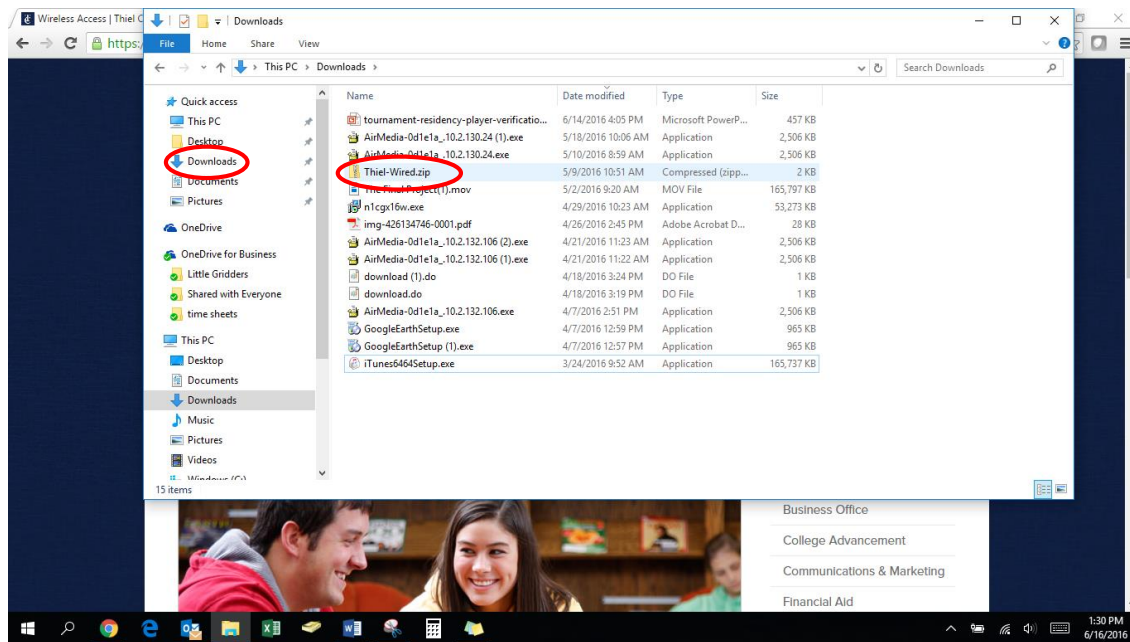
- How to connect to the Thiel network – [click here](#)
- [Download the zip file](#).

THIEL COLLEGE

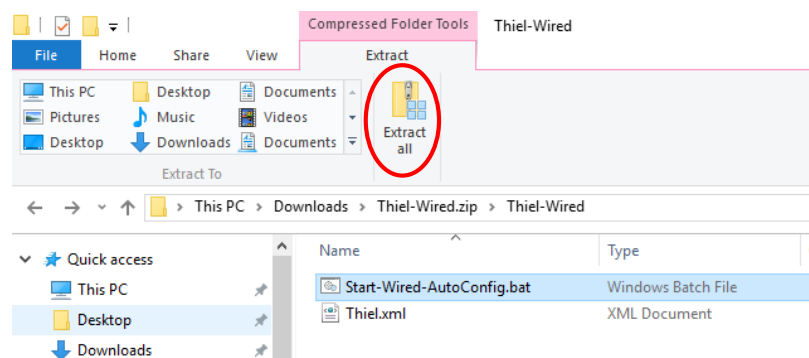
Information Technology Support Center

VISIT US IN AC-125 OR CALL X4000 FOR HELP

6. In your *Downloads* folder, double click and open the *Thiel-Wired.zip* file.



7. Click *Extract all*.

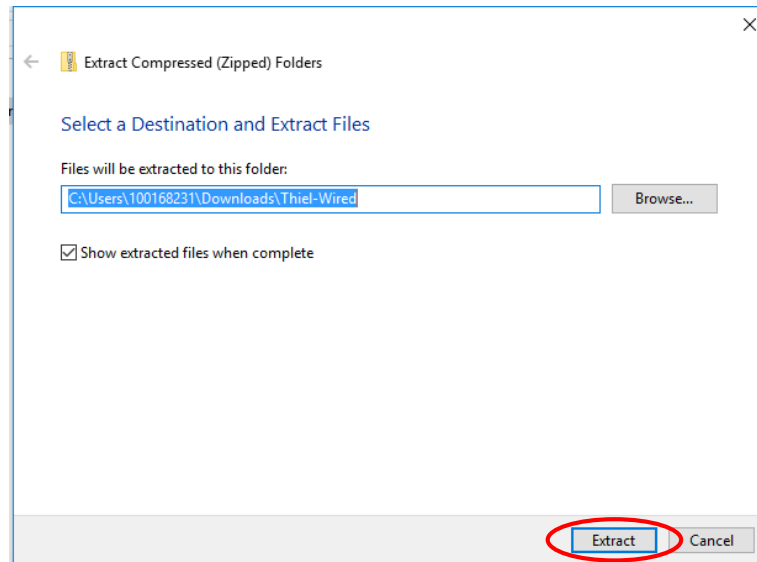


THIEL COLLEGE

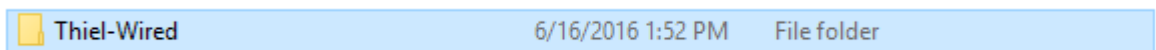
Information Technology Support Center

VISIT US IN AC-125 OR CALL X4000 FOR HELP

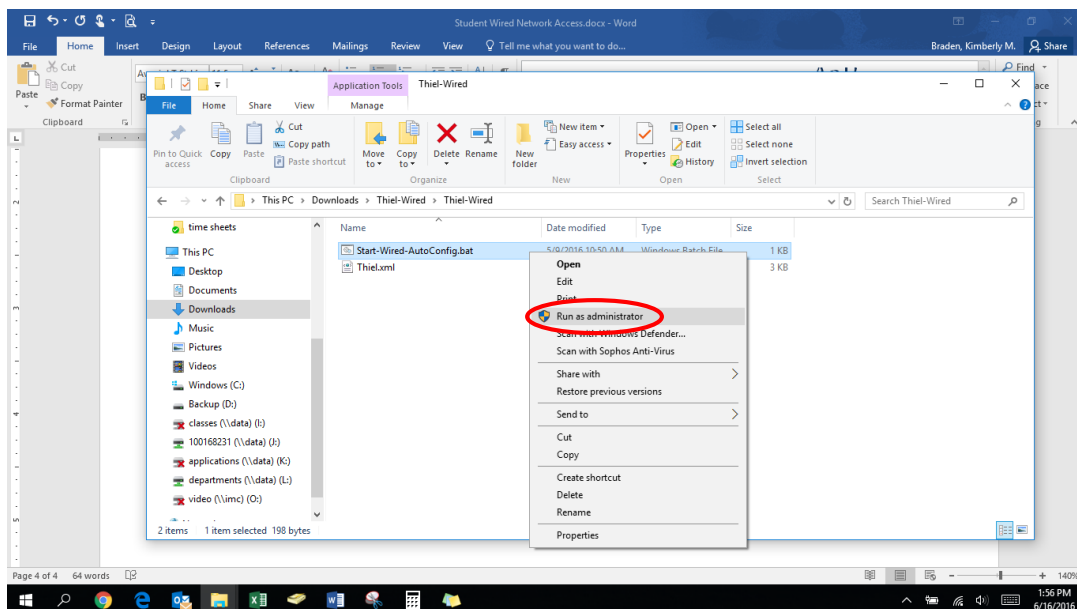
8. Click *Extract*.



9. Double click to open to open the *Thiel-Wired* folder.



10. Right click on *Start-Wired-AutoConfig.bat* and *Run as administrator*.

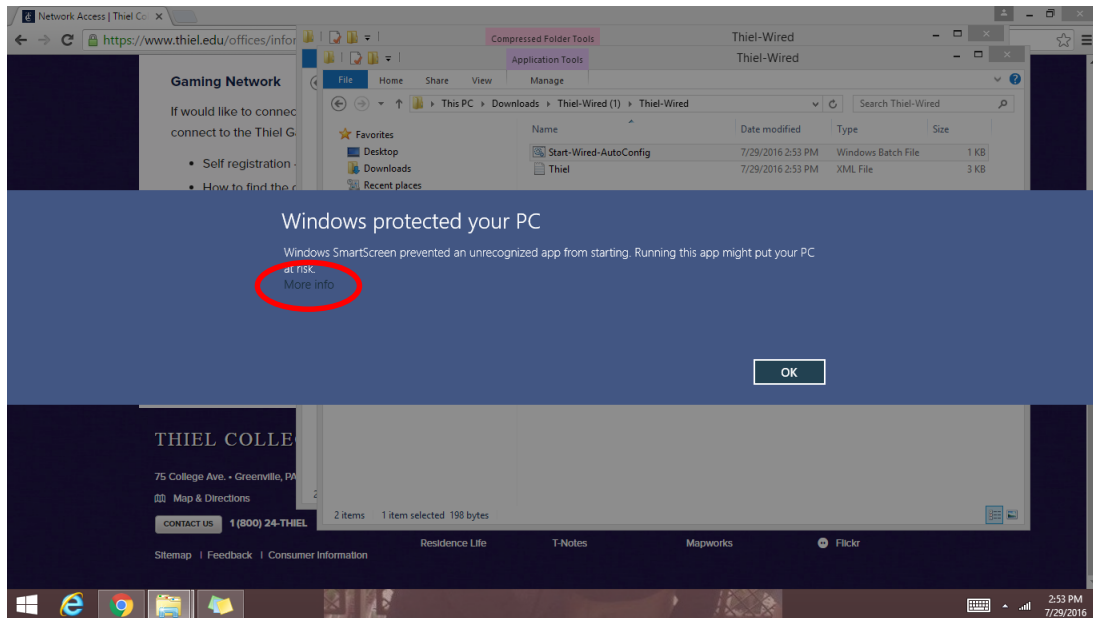


THIEL COLLEGE

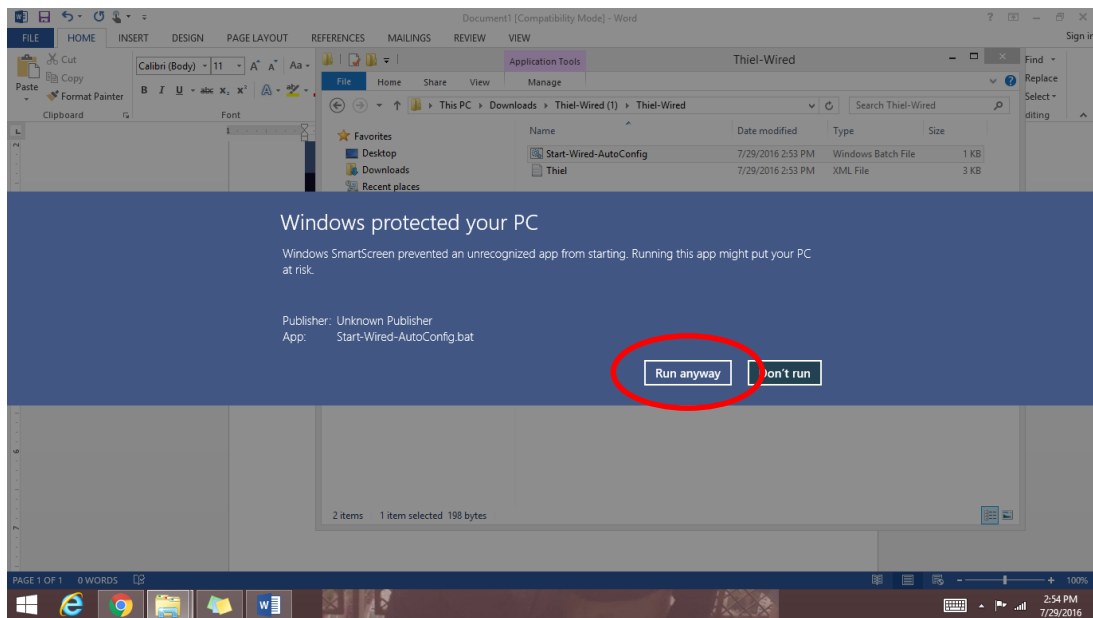
Information Technology Support Center

VISIT US IN AC-125 OR CALL X4000 FOR HELP

11. If this box should pop up, click [More info](#). Otherwise proceed to step 13.



12. Click [Run anyway](#).



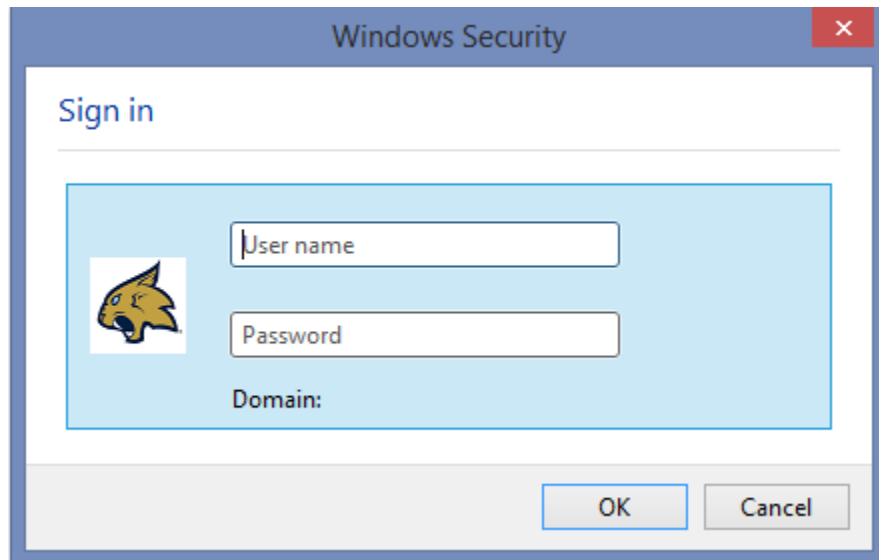
13. Click [Yes](#) on the prompt.

THIEL COLLEGE

Information Technology Support Center

VISIT US IN AC-125 OR CALL X4000 FOR HELP

14. *Restart* your computer.
15. Once your computer is restarted and you plug into a Wired Network Port, you will be prompted to provide your Thiel ID and password credentials. Enter *thiel/your ID number* for User Name. Enter your *webmail password* for Password. Once you have entered your credentials, you will be authenticated and able to access network resources such as printers and shared folders. If you have any questions or need additional help, please contact the Solution Center at 724-589-4000 or solutioncenter@thiel.edu



16. If you need further assistance or have any questions, please contact the Solution Center at 724-589-4000 or solutioncenter@thiel.edu