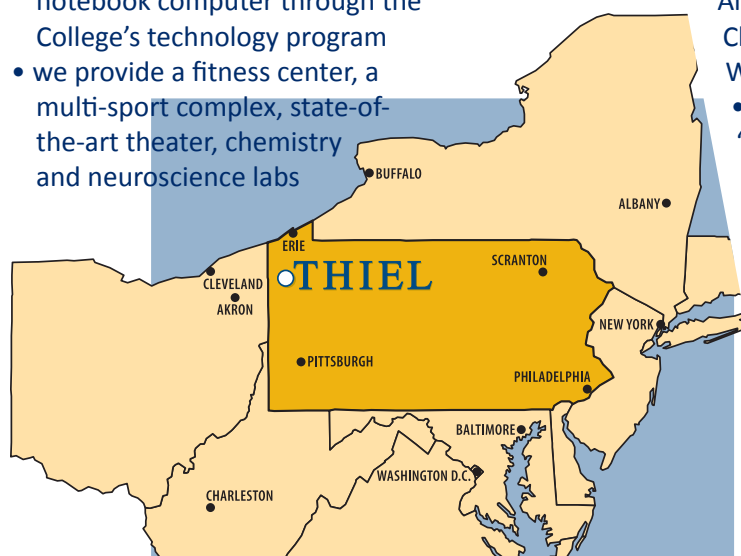


AT THIEL COLLEGE...

- our professors are highly accessible and very involved in your growth and learning
- we have “smart” technology classrooms
- every student is provided with a notebook computer through the College’s technology program
- we provide a fitness center, a multi-sport complex, state-of-the-art theater, chemistry and neuroscience labs

THIEL COLLEGE IS...

- located on a beautiful tree-lined campus in the heart of western Pennsylvania’s hill country.
- only a 90-minute drive from Pittsburgh, Cleveland, and Erie, and a half-hour flight from Pittsburgh International Airport to New York, Chicago, Boston and Washington, DC!
- close enough to the “big city” but also far away enough to be safe, friendly and free from distractions.



THIEL COLLEGE

offers:

- English Language support
- More than 60 majors and areas of study
- 13:1 student/faculty ratio = small classes & personal attention
- Internships and professional experience
- More than 50 clubs and student organizations
- 24 varsity sports teams for men & women

2011 - 2012
Tuition & Fees:
\$27,006

Room & Board:
\$9,652

Books & personal
expenses:
\$1,500

Total: \$38,158

*all tuition and fees are subject to change

Unconditional Academic Admission:

- TOEFL: 503 (PBT), 62 (IBT)
- IELTS: 6.0 band
- ACT: 18 composite score
- GPA: 2.4 cumulative
- SAT: 900/1600 scale
- STEP EIKEN: 2A

Conditional (Minimum) Academic Admission:

- TOEFL: Fall—450 (PBT), 45 (IBT); Spring—477 (PBT), 53 (IBT)
- IELTS: Fall—5.0 band;
- Spring—5.5 band
- STEP EIKEN: 2

Other Requirements

- A complete physical examination and updated immunization records are required prior to registration for classes.

Documentation Required

- Application form and passport copy
- Official senior high school transcript or official university/college transcripts
- Statement of objective (essay)
- Two letters of recommendation
- Bank statement of sponsor
- Sponsor’s affidavit of support or financial certification form
- Nonrefundable application fee (\$50)

Government Documentation

- Thiel College is authorized by the U.S. government to issue Form I-20 for student use in securing the F-1 visa. All students bearing non-immigrant student F-1 visas are required to initially attend the educational institution issuing the Certificate of Eligibility.

CONTACT US:
International Admissions
75 College Avenue
Greenville, PA 16125-2181
724-589-2345
admissions@thiel.edu
724-589-2013 FAX

Majors

Accounting
Actuarial Studies (BS)
Binary Engineering (BS)
Biology
Biology/Conservation
Business Administration/Advertising
Business Administration/Finance
Business Administration/General
Business Administration/HR
Business Administration/Marketing
Business Administration/Management
Business Communication
Chemistry
Chemistry/ACS Certification (BS)
Commercial Art

Communication Sciences & Disorders (BA/BS)
Communication Studies
Computer Science
Culinary Arts
Criminal Justice Studies
Cytotechnology
E-Commerce (BS)
Early Childhood/Special Education
English/Literature
English/Writing
Environmental Chemistry
Environmental Science (BS)
Fine Art
Forensic Accounting
History

International Business
Management Information Systems (BS)
Mathematics
Media Communication
Medical Technology
Neuroscience
Parish Education
Philosophy
Physics (BS)
Political Science
Psychology
Religion
Sociology
Theology & Youth Ministry
Web Development (BS)

Minors

Accounting
Biology/Behavioral
Biology/Food & Agriculture
Biology/Medical
Biology/Wildlife
Biochemistry
Business Administration/General
Chemistry
Church Music
Coaching
Communication Studies

Computer Science
Economics
English
Environmental Chemistry
Fine Art
History
Individualized Minor
International Studies
Legal Studies
Mathematics
Media Communication

Music
Parish Education
Performing Arts
Philosophy
Physics
Political Science
Pre-Ministry
Psychology
Religion
Sociology
Theatre

Pre-Professional

Binary Engineering
Cytotechnology
Education
Medical Technology
Mortuary Science
Pre-Dental
Pre-Law
Pre-Medical
Pre-Ministry
Pre-Occupational Therapy
Pre-Optometry
Pre-Pharmacy
Pre-Physician Assistant
Pre-Physical Therapy
Pre-Podiatry
Pre-Veterinary

Cooperative Programs

Art Institute of Pittsburgh
Binary Engineering (3+2 Program)
Business Administration/Culinary
Cytotechnology (3+1 Program)
Forestry & Environmental Management
Medical Technology (3+1 Program)
Pittsburgh Institute of Mortuary Science

Education Program

Early Childhood/Special Education
Secondary Education Certification

- Biology
- Chemistry
- Citizenship
- English
- General Science
- Mathematics
- Physics
- Social Studies

Associates Degrees

Associate of Arts

Accounting
Liberal Studies
Management Information Systems

Associate of Science

E-Commerce
Science
Web Development

Student Organizations

American Chemical Society
Art Club
English Club
Fraternities/Sororities
Habitat for Humanity
Lutheran Student Movement
Marching Band
Men's Leadership
Pre-Law Society
Shooting Club
Student Athlete Advisory
Committee

Student Government
TC Democrats/Republicans
Thiel Christian Fellowship
Thiel Players (theatre)
Thiel World Organization
Women Inspiring the Next
Generation (WING)
Endymion (yearbook)
The Thiel Choir
Thielensian (newspaper)
TCTV (television station)
plus many more!

Athletics

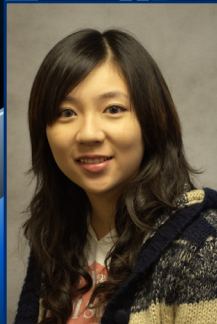
Women's
Basketball
Cheerleading
Cross Country
Dance
Golf
Lacrosse
Soccer
Softball
Tennis
Track (Indoor/Outdoor)
Volleyball

Men's
Baseball
Basketball
Cheerleading
Cross Country
Football
Golf
Lacrosse
Soccer
Tennis
Track (Indoor/Outdoor)
Volleyball
Wrestling

Global Voices at Thiel

Yuening Liu (Junior)
International Business
Shanghai, China

Thiel is the best study experience I have ever had. It has been easy to enjoy the happiness of freedom and gain knowledge that will enrich my whole life. Thiel is a small sweet campus and everyone treats each other like a family member. Here, people care about you, they are eager to help you to enjoy a great campus life.



Events, such as Greek life parties and the cultural show, are held every year to help improve the relationships among the students. Thiel is also the safest campus I have ever seen which makes me feel free to enjoy my life here. Come to Thiel—it is the best choice you will ever make.

Yoori Kim (Junior)
History/Education
Pusan, Korea

I am an exchange student from Ewha Womans University in Seoul, Korea. My life here at Thiel will be one of my most precious memories. The people I have met at Thiel have helped me adjust easily. Their friendliness and care have been important to me. Thiel provides international students with lots of activities like a parade, culture show and several trips so that we can make great memories.



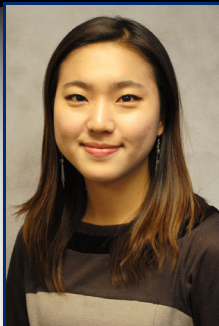
Being abroad with other international students from around the world is a very good opportunity as well. Also, being a member of The Thiel Choir really enriched my life here. Everyday practice was joyful, our concerts were memorable, and I am looking forward to a spring concert tour which will be the greatest memory I've made at Thiel College.

Satbyul Park (Senior) • English/Education • Seoul, Korea

I have spent the happiest time of my life here at Thiel. First of all, I have participated in a variety of athletic programs. Being on the varsity cross country team is the most meaningful memory to me this semester. Thanks to the cross country team, I made great American friends as well as felt proud of myself. Also, cheerleading is a unique experience for me because I never cheered before I came here from Korea. While I cheered for the Tomcats, I felt like I was a member of the Thiel family. Not only that, I have had the opportunity to learn golf, archery and bowling by taking those classes. Thiel is really helpful for the international students. I have improved my English skills by taking academic classes, free tutoring (ESL chatting group), and having my grammar mistakes checked before handing in my papers.

These are all definitely helpful resources to me. Moreover, I can meet a lot of international students from Japan, China, Rwanda, Kenya and Vietnam. We participated in the

Homecoming parade together while each wearing our traditional costumes! I will never forget these precious memories at Thiel.



Sawan P. Amoah (Senior)
International Business • Accra, Ghana

Thiel College offers a well rounded choice of subjects for my major. The liberal arts background of the college allowed me to be flexible with subjects I chose in the pursuit of my degree. Intercultural communication, basic business classes and physical education classes are integrated into my academic experience at Thiel. The small size of the school also allows access to all my professors on a one-to-one basis.



Joy Mboya (Sophomore)
Actuarial Studies • Nairobi, Kenya



One of my greatest worries before I arrived at Thiel was being homesick but when I arrived on campus I got to know many different students and joined different organizations including a sorority. I also got to know my professors, the staff and some of their families. They all showed me what being welcome really felt like. This has helped me a great deal in my studies; the environment that was set for me from the very start helped keep my mind off being home sick and instead focused on doing well.

International Student Admissions
75 College Avenue
Greenville, PA 16125-2181
724-589-2345
admissions@thiel.edu
724-589-2013 FAX

THIEL
COLLEGE

Thiel College does not discriminate on the basis of race, color, sex, religious belief, national origin, ancestry, age or non-job related handicap as those items are defined under applicable law. This policy of non-discrimination applies in connection with admission to and participation in all programs and activities sponsored by Thiel College and to all employment practices of Thiel College.